



# LEAGUE OF WOMEN VOTERS OF THE CITY OF NEW YORK EDUCATION FUND

45 EAST 33RD STREET, ROOM 331, NEW YORK, NY 10016 (212) 725-3541 WWW.LWVNYC.ORG

The League of Women Voters of the City of New York is a nonpartisan organization whose purpose is to promote informed and active citizen participation in government. It neither supports nor opposes candidates or political parties. Membership is open to all women and men who subscribe to its purpose. The League is supported by membership dues and contributions from public-spirited individuals, businesses and organizations.

## HOW TO BE A VOTER REGISTRATION, ENROLLMENT, VOTING

To vote you must be a U. S. citizen, 18 years of age, and a resident at your present address for 30 days by Election Day, and you must be registered.

### REGISTRATION

New York State has Permanent Personal Registration. If you are not registered or if you have moved and have not reinstated your registration, you may register by mail or in person at your local Board of Elections. Forms can be obtained from your local Board of Elections in English, Spanish, Chinese and Korean.

- \* Call 212-VOTE-NYC (868-3692).
- \* TDD Hearing Impaired 212/497-5496

Forms are also available at U.S. Post Offices, public libraries and Government offices.

### PARTY ENROLLMENT

You may enroll in the party of your choice when you register. Party enrollment entitles you to vote in your party's primary elections. (You can still vote for any party's candidate in the general election.)

### BOROUGH BOARDS OF ELECTION

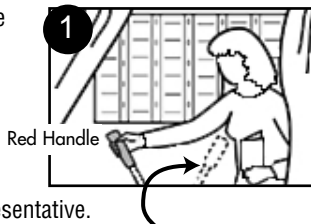
Monday–Friday 9 A.M. to 5 P.M.

- Bronx 1780 Grand Concourse (10457) (718) 299-9017
- Brooklyn 345 Adams Street (11201) (718) 797-8800
- Manhattan 200 Varick Street (10014) (212) 886-2100
- Queens 126-06 Queens Blvd (11415) (718) 730-6730
- Staten Island 1 Edgewater Plaza (10305) (718) 876-0079

## HOW TO USE THE VOTING MACHINE

Step through the curtain and move the red handle all the way to the right. You may bring a list of your choices into the voting booth.

If you need assistance you can bring another person with you, except an employer or union representative.



### TO WRITE-IN A VOTE

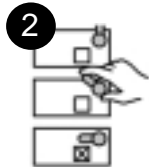
If you don't like any of the candidates on the ballot for a specific office, you can write in your choice. Be sure you have voted for all the other candidates you want. Moving the write-in slides locks out your vote for all the other candidates for that office.

Locate the button over the column of numbered slots on the left side of the voting machine. Depress the button and, while holding it in, open the designated slot opposite the office(s) for which the vote is intended (indicated on ballot face as candidate's name slot).

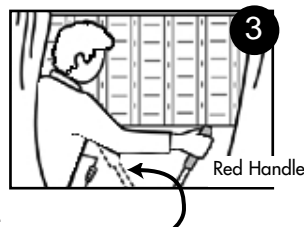
Write or stamp the name of the preferred candidate in the slot—a pencil set is installed for voter's convenience. Pull the red voting handle back to the starting position and the write-in slot will close.

If you need assistance in using the write-in function put your head through the curtains and ask for assistance. DO NOT pull the red handle. Two inspectors (one from each party) will enter the booth to help you.

Push down the lever next to the name of the candidate you want to vote for. An "X" will appear. Do this for each office to be filled. If you make a mistake, push the lever back up and depress the lever next to the candidate you prefer to vote for. Look over the candidates you have selected. Choose only one candidate for each office unless the ballot says to vote for more.



When you have finished voting leave all the levers down. DO NOT RETURN THE LEVERS TO THE UP POSITION OR YOU WILL LOSE YOUR VOTE. Pull the lever with the red handle all the way to the left. Activating this lever registers your vote.



### TO VOTE ON THE QUESTIONS

Questions, propositions and amendments are in a separate column at the right. Find out about them before Election Day. Vote "Yes" or "No" to each one.